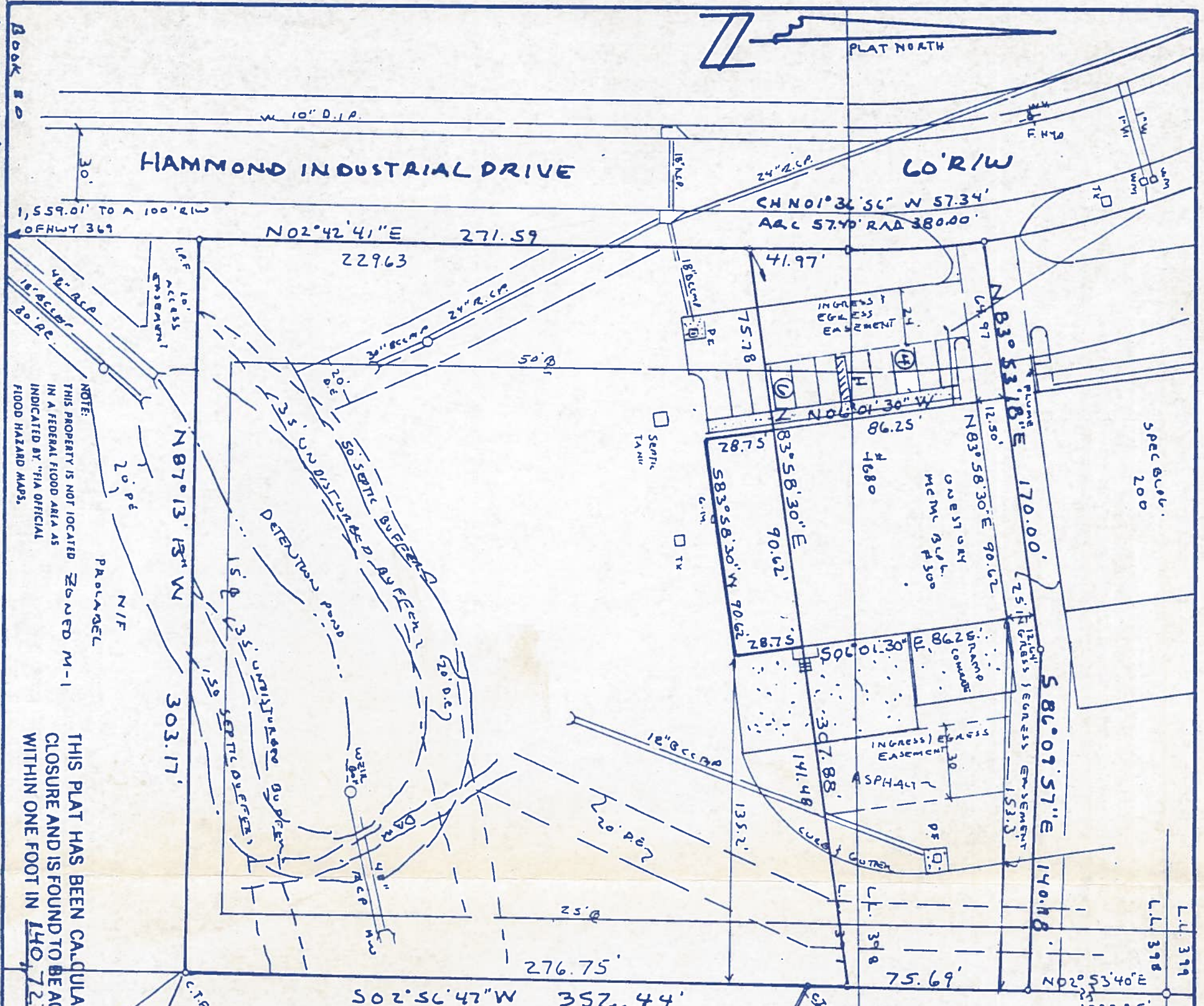


JN 20-22A



NOTE:
THIS PROPERTY IS NOT LOCATED ZONED M-1
IN A FEDERAL FLOOD AREA AS
INDICATED BY "FIA OFFICIAL
FLOOD HAZARD MAPS.

THIS PLAT HAS BEEN CALCULATED FOR
CLOSURE AND IS FOUND TO BE ACCURATE
WITHIN ONE FOOT IN 140,721 FEET.

76,892 SQ. FT.
1.77 ACRES

THE FIELD DATA UPON WHICH THIS PLAT IS BASED
HAS A PRECISION OF ONE FOOT IN 27,407 FEET
AND AN ANGULAR ERROR OF 4" PER ANGLE POINT,
AND WAS NOT ADJUSTED.

SURVEY FOR

BEDOLA ENTERPRISES, INC.

FORSYTH 369 INDUSTRIAL PARK
SOUTH PORTION OF BLDG. 300
LAND LOTS 3981397 14TH DISTRICT 2ND SECTION
FORSYTH COUNTY GEORGIA

SCALE 1" = 50'

PETER J. PIETRASZUK W.L.S.
BY
ATLANTA, GA 30327
464-813-2097

APRIL 11, 2000
REVISED 4-11-2000
REVISED 5-04-2000
TO CHANGE NAME



APPROXIMATE LAND LINES
L.L. 440 REPRESENTATION OF THE LAND PLATTED
WITH THE MINIMUM STANDARDS AND
REQUIREMENTS OF LAW.
PETER J. PIETRASZUK W.L.S. NO. 2702

- LEGEND:
- I.P.S. = IRON PIN SET
 - I.P.F. = IRON PIN FOUND
 - C.O. = CLEAN OUT
 - W.V. = WATER VALVE
 - W.M. = WATER METER
 - D.I. = DROP INLET
 - G.M. = GAS METER
 - G.V. = GAS VALVE
 - J.B. = JUNCTION BOX
 - H.W. = HEADWALL
 - C.B. = CATCH-BASIN
 - T.X. = TRANSFORMER
 - C.G. = CURB/GUTTER
 - Y.I. = YARD INLET

EQUIPMENT USED Topcon G75212



REC'D MAY 05 2000